

QUICKSTART GUIDE for VIO® 200 S

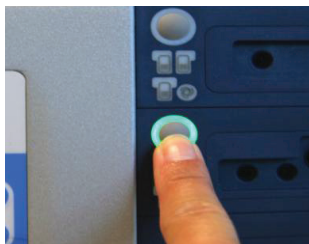
Set up for Snare/Hot Biopsy Use

1 Turn ON the Unit.

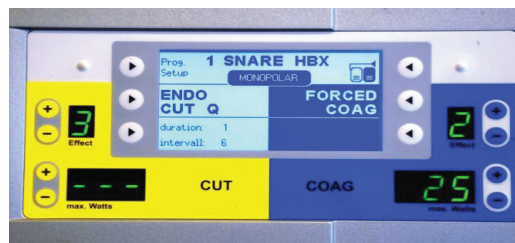
2 The message box will say, "Please confirm the settings by pressing any key!" (Note: the last program used will be the one displayed). To choose a different program: Prog. Setup → Select program → scroll to Snare/Hot Biopsy.



3 Press the FOCUS Active Display button beside the Monopolar receptacle.



4 Check the Program Screen to confirm the settings (Default program shown).



5 Plug in the Active Cord and attach the Snare or Hot Biopsy Forceps.



6 Plug the Grounding Pad into the NEUTRAL receptacle and place the Pad on the patient.

7 Place Footswitch at the physician's feet. Verbally confirm settings with physician.

8 READY to begin procedure.

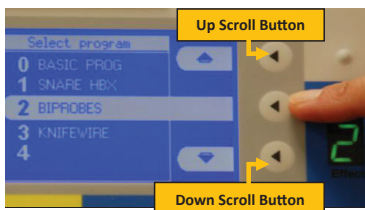
Adjust settings per physician direction, increasing the Effect then max. Watts for more power.

QUICKSTART GUIDE for VIO® 200 S

Set up for Bipolar Use

1 Turn ON the Unit.

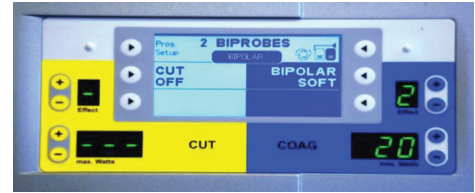
2 The message box will say, "Please confirm the settings by pressing any key!" (Note: the last program used will be the one displayed). To choose a different program: Prog. Setup → Select program → scroll to Biprobes.



3 Press the FOCUS Active Display button beside the Bipolar receptacle.



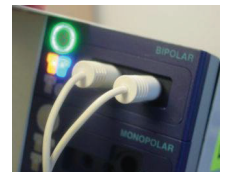
4 Check the Program Screen to confirm the settings (Default program shown).



5 Plug the Single plug accessory device into large¹ hole or use a Banana style plug probe² (Utilize large hole and either of the remaining smaller holes).



1



2

6 NO Grounding Pad needed.

7 Place Footswitch at the physician's feet. Verbally confirm settings with physician.

8 READY to begin procedure.

Adjust settings per physician direction, increasing the Effect then max. Watts for more power.